



**Secure** from the **START**

# Phoenix ImageCast™ 6 for manufacturing

## Fast, Intelligent, Powerful System Imaging and Deployment

Best-in-class imaging performance

Increased productivity and efficiency

Multicast image deployment

Standalone image deployment

Powerful flexible image customization for high value CTO/BTO

Customizable for your manufacturing environment

Enable end-point confidence for your customers

### The new performance leader in system imaging and deployment

Phoenix ImageCast™ 6 drives productivity and efficiency by reducing deployment time, resource requirements, and costs

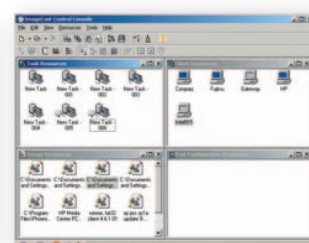
### Increased productivity and efficiency

- Fast-imaging performance – The new imaging performance leader with faster performance than other solutions
- Multicast deployment – Centrally deploy one system image to many systems at one time
- Standalone image deployment - Local deployment from disk or the network
- Powerful, flexible customization for high value BTO/CTO (Build to Order/Configure to Order) – Customize standard-system images to meet usage, network, and location requirements for your customers
- Enables end-point confidence – Use system images with your customer's software stacks and corporate system policy customization to enable compliance and security

### Powerful capabilities - Easy to use GUIs and flexible integration capabilities

ImageCast 6 combines powerful, easy to use GUIs with flexible automation, scripting, and integration into your manufacturing environment. ImageCast 6 GUI-based wizards are used for:

- Gathering new system images
- Centrally deploying with multicast, broadcast, point-to-point, and self-announce connections
- Creating ImageCast Clients for standalone and central imaging
- Discovering new clients
- Creating and implementing new post-installation configuration sets



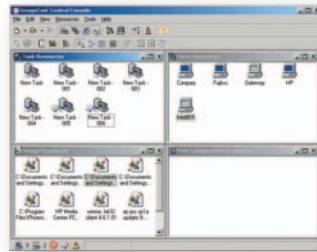
## Imagecast 6 – The new leader in system imaging performance

| Feature                               | Function   | Benefit  |
|---------------------------------------|--|--|
| Image Capture                         | Create and capture standard system images  | Fast, easy creation of factory builds or of customer corporate policy compliant, secure standard system builds for BTO/CTO                             |
| Centralized Deployment with Multicast | Automatically discover new systems, maintain a library of standard images and deploy images to multiple systems at one time using network multicasting | Improve productivity and efficiency by quickly deploying standard system builds to many systems at once  |
| Standalone Deployment                 | Pull images to client systems over the network from local disk or install via CD and DVD   | Integrate with your existing workflows with standalone deployment  |
| Image Customization                   | Create scripts and registry configurations that are unique to different areas of your networks or system usage   | Have the capability to extend BTO/CTO not only to the software stack, but also for your customers intended system use and physical or network location |

### Major Product Elements:

#### Control Console

- Discover clients
- Gather images
- Control deployment groups
- Schedule deployments
- Configuration and management for other elements



#### PXE Server

- Used with Control Console to discover clients without a boot CD



#### ImageCast Client

- Boot CD created by Control Console "ClientBuilder" application
- Gather and deploy images from local disk, network or Control Console
- Phoenix Always platform based (Always Available, Always Secure, application management platform based (Linux variant))



#### Post Config Injector

- Customize network and registry settings, set execution of post image scripts

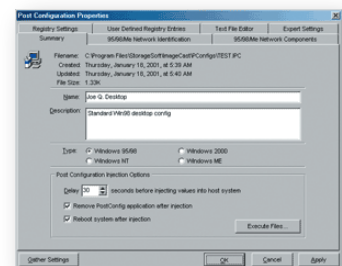
### System Requirements

Image Control Console  
Server/PXE Server

- 1GHz or better, Intel Pentium 4 class or better with networking capability
- Windows 2000 or XP workstation, or XP/2003 Server
- Storage capacity sized for image files as needed

### Clients

- Pentium 4 Class CPU or better, 256MB RAM or better
- Windows: 95, 98, ME, NT (SP4 or later), 2000, XP
- Linux: Red Hat 9, Fedora, SuSe, Turbo Linux
- File systems – FATXX, NTFS, Ext2, Ext3
- VGA with VESA 2.0 or later support
- IDE, SATA, SCSI, RAID 0 or RAID 1 drive or drive array. Tested to 1TB
- Ethernet for imaging over the network
- CD/DVD drive, additional internal disk, or local USB drive for local imaging



### Secure from the START

Phoenix Technologies is a global market leader in device-defining software that enables endpoint security from the start. The company first established dominant industry leadership over 25 years ago with BIOS software. From this unique foundation of core level expertise and firmware offering the highest levels of reliability, Phoenix has created a portfolio of innovative software products that simply and easily identify and restore devices, thereby assuring users unparalleled endpoint security and availability.

#### Phoenix Technologies Ltd.

915 Murphy Ranch Road  
Milpitas, CA 95035 USA  
408.570.1000 main  
408.570.1001 fax

800.446.9202 North America sales  
781-BUY PTEC Outside North America sales

©2006 Phoenix Technologies Ltd. Phoenix and Phoenix Technologies are registered trademarks of Phoenix Technologies Ltd. All rights reserved worldwide. All other brand or product names are the trademarks and property of their respective holders.