



Secure from the **START**

Phoenix ImageCast™ 6 for enterprise

Fast, Intelligent, Powerful System Imaging and Deployment

Best-in-class imaging performance

Minimizes system deployment costs

Multicast image deployment

Standalone image deployment

Powerful, flexible image customization

Enables end-point confidence and security

Increase productivity and efficiency

ImageCast 6 has the right capabilities to improve productivity and efficiency by reducing the time and resources required to deploy new systems and refresh older ones:

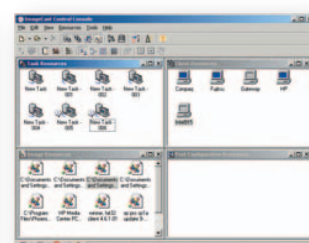
- Fast-imaging performance – The new imaging-performance leader with faster performance than other solutions
- Multicast deployment – Centrally deploy one system image to many systems at one time
- Standalone image deployment – Local deployment from disk or the network
- Enables end-point confidence – Drives compliance and security by assuring that your systems are deployed with your corporate “best practices” for compliance and proactive security with easy creation of standard-system images
- Powerful, flexible customization of standard-system images meets your customer’s usage, network, and location requirements

Powerful capabilities - Easy to use

Powerful capabilities, without a steep-learning curve, are key to getting your organization up and running with greater productivity and efficiency. ImageCast 6 has easy to use, GUI-based wizards for:

- Gathering new system images
- Centrally deploying with multicast, broadcast, point-to-point and self announce connections
- Creating ImageCast clients for standalone and central imaging
- Discovering new clients
- Creating and implementing new post-installation configuration sets

For more power and integration with other applications use scripts to customize the operation of ImageCast 6 to your organization’s needs.



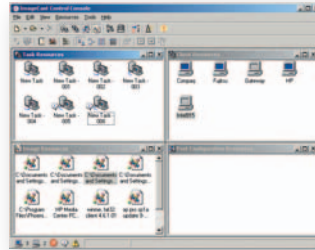
ImageCast 6 – The new leader in system-imaging performance

Feature	Function	Benefit
Image Capture	Create and capture standard system images	Drive end-point Confidence with fast, easy creation of corporate policy compliant secure standard system builds
Multicast Deployment	Deploy an image to multiple systems at one time	Save time, money and drive security and compliance by quickly deploying standard system builds to many systems at once
Standalone Deployment	Pull images to client systems over the network or install via CD or DVD	Reduce deployment effort by keeping standardized secure compliant images on the network but allowing local deployment when needed
Image Customization	Create scripts and registry configurations that are unique to different areas of your networks or system usage	Customization of corporate standard images for worker tasks and physical or network location provides the flexibility needed for appropriate security and usage

Major Product Elements:

Control Console

- Discover clients
- Gather images
- Control deployment groups
- Schedule deployments
- Configuration and management for other elements



PXE Server

- Used with Control Console to discover clients without a boot CD



ImageCast Client

- Boot CD created by Control Console "ClientBuilder" application
- Gather and deploy images from local disk, network or Control Console
- Phoenix Always platform based (Always Available, Always Secure, application management platform based (Linux variant))



Post Config Injector

- Customize network and registry settings; set execution of post image scripts

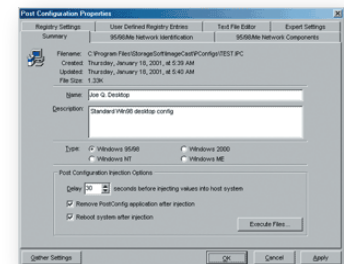
System Requirements:

Image Control Console
Server/PXE Server

- 1GHz or better, Intel Pentium 4 class or better with networking capability
- Windows 2000 or XP workstation, or XP/2003 Server
- Storage capacity sized for image files as needed

Clients:

- Pentium 4 Class CPU or better, 256MB RAM or better
- Windows: 95, 98, ME, NT (SP4 or later), 2000, XP
- Linux: Red Hat 9, Fedora, SuSe, Turbo Linux
- File systems – FATXX, NTFS, Ext2, Ext3
- VGA with VESA 2.0 or later support
- IDE, SATA, SCSI, RAID 0 or RAID 1 drive or drive array. Tested to 1TB
- Ethernet for imaging over the network
- CD/DVD drive, additional internal disk, or local USB drive for local imaging



Secure from the START

Phoenix Technologies is a global market leader in device-defining software that enables endpoint security from the start. The company first established dominant industry leadership over 25 years ago with BIOS software. From this unique foundation of core level expertise and firmware offering the highest levels of reliability, Phoenix has created a portfolio of innovative software products that simply and easily identify and restore devices, thereby assuring users unparalleled endpoint security and availability.

Phoenix Technologies Ltd.

915 Murphy Ranch Road
Milpitas, CA 95035 USA
408.570.1000 main
408.570.1001 fax

800.446.9202 North America sales
781-BUY PTEC Outside North America sales

©2006 Phoenix Technologies Ltd. Phoenix and Phoenix Technologies are registered trademarks of Phoenix Technologies Ltd. All rights reserved worldwide. All other brand or product names are the trademarks and property of their respective holders.